

Pembroke Center

for TEACHING AND RESEARCH ON WOMEN

2007-08 Pembroke Seminar: The Question of Identity in Psychoanalysis

Bernard Reginster, Associate Professor of Philosophy, will lead the 2007-08 Pembroke Seminar.

The 150th anniversary of Sigmund Freud's birth has occasioned many reassessments of psychoanalysis, some of which are quite critical. Such criticisms tend to ignore two facts. One is that some of Freud's most basic ideas have become so deeply entrenched that their Freudian origins are overlooked. The other is that, over the century since Freud's early psychoanalytical works, the discipline he invented witnessed a theoretical explosion of new ideas, primarily about the issues of identity and intersubjectivity. These new ideas have produced a rich and sometimes confusing fabric of theoretical effects on disciplines as diverse as cultural studies, race and gender studies, literary and media studies, philosophy, religious studies, history, and anthropology.

What is the identity, the "ego" or sense of self, of which psychoanalysts speak? What does it mean to claim, as Freud did, that "the ego is primarily a bodily ego"? What are we to make of the fact, recently acknowledged by both child psychoanalysts and developmental psychologists, that some of the earliest, most primitive layers of the sense of self develop before the capacity for verbalizable (self-) representation? What is the relation of identity to basic human needs?

The time has come to take stock. The seminar will explore psychoanalytic views on identification, intersubjectivity, and their interrelation. For a full seminar description, please visit: www.pembrokecenter.org.

25th Anniversary Lecture Series - Future of Critique

The Pembroke celebrates its twenty-fifth anniversary with a series of programs on "The Future of Critique." Fundamental to the Center's research, the practice of critique seeks to grasp the ways differential systems of "gender," along with ethnicity, race, and other systems of difference, produce cultural, political, and scientific meanings. The series continues in April with two colloquia:

April 17 The Future of Social and Cultural Critique

1:30 pm
Crystal Room
Alumnae Hall

Srinivas Aravamudan
Professor of English
Duke University

Talal Asad
*Distinguished Professor
of Anthropology*
City University of New York
Graduate Center

Wendy Brown
Professor of Political Science
University of California at Berkeley

Joan Wallach Scott
*Harold F. Linder Professor
of Social Science*
Institute for Advanced Study



Hank Randall

Judith Butler, Maxine Elliot Professor of Rhetoric and Comparative Literature, University of California at Berkeley, delivered a lecture on January 29 on "Critique and Disciplinarity: Foucault via Kant." The lecture was first in a series of programs on "The Future of Critique."

April 19 The Future of Critique in Science and Technology

2:00 pm
Crystal Room
Alumnae Hall

Wendy Chun
*Associate Professor of
Modern Culture and Media*
Brown University

Anne Fausto-Sterling
*Professor of Biology and
Gender Studies*
Brown University

Elizabeth Wilson
ARC Australian Research Fellow
University of New South Wales

Cosponsors of the series are the departments of Modern Culture and Media, English, Comparative Literature, and Anthropology; the Science Studies program, and the Cogut Humanities Center.

Mediated Bodies/Bodies of Mediation

Lynne Joyrich, Associate Professor of Modern Culture and Media and the Chesler-Mallow Senior Faculty Research Fellow at the Pembroke Center, is the director of the 2006-07 Pembroke Seminar. This year the seminar is exploring the relationships between the body and technology across histories and cultures; relationships ranging from pros-

theses to cloning and reproductive technologies to media and interactive technologies of all sorts.

It is said that we live in a media-saturated world, that the media now constitute the very air we breathe. But what kind of bodies breathe this air (or airwaves), and how are they formed by media technologies and texts? How do bodies appear and dis-

appear in media culture? What other “bodies of mediation” have existed in, for instance, oral, print, or mechanical cultures? The seminar examines what is meant by “media” and “body,” as both are subject to historical change, technological reframing, and philosophical debate.

For a full seminar description, please see: www.pembrokecenter.org.



Jennifer Boyle

Carol G. Lederer Postdoctoral Fellow
Ph.D. in English, University of California, Irvine, 2003
Assistant Professor of English,
Hollins University

Project: “The Anamorphic Imaginary: Perspective and Embodiment in Early Modern Literature and Technoscience”

This interdisciplinary project draws on literary and critical studies, art history, science, and new media studies to look at the relationships between early modern perspective and questions of embodiment. Boyle understands perspective as a medium, a material and symbolic technology that generates an image of three-dimensional space associated with everything from the high art of realist aesthetics to Cartesian rationalism and its afterlives within video gaming environments and military targeting systems. The crucial developments in optics, empirical science, and aesthetics made possible by perspective imaging also generated questions about bodily perception and affect. Perspective informed some of the earliest debates in Western Europe over the power of technologically enhanced images and embodiment.



Eden Osucha

Nancy L. Buc Postdoctoral Fellow
Ph.D. in English,
Duke University, 2006

Project: “The Subject of Privacy: Productions and Regulations of Intimate Personhood in Modern American Culture”

This project explores the legal construct of “intimate personhood” at the core of privacy rights doctrine in the present-day U.S. and looks at its relationship to contemporary literary and visual cultures of public embodiment. This conjunction of legal intimacy and media publicity reveals how the forms of gendered and sexual citizenship both presumed and consolidated by privacy law can be traced to histories of race-based exclusions and particular modes of media production in the evolution of American citizenship. Working at the intersections of feminist and queer cultural theory as well as critical race-based cultural studies, this project takes as its focus the question of mediated embodiment too often deemed irrelevant for critical analysis in the fields of critical legal studies, social theory, and technoculture, fields now dominant in critical scholarship on the right to privacy.



Alanna Thain

Artemis A.W. and Martha Joukowsky Postdoctoral Fellow
Ph.D. in Literature, Duke University, 2005
Assistant Professor of English,
McGill University

Project: “In Mediacy: Screen/Dance and Virtual Corporealities”

This project examines the intersections of live dance performance and screen/dance (both live action and animated) in the works of Streb, Compagnie Marie Chouinard, Norman McLaren, and others. In connecting two arts of movement—cinema as the recorded liveliness of the moving pictures (where film theory has too often seen only an illusion of movement) and dance as the live immediacy of performing bodies (a perspective that fails to understand the dancing body itself as a recording technology)—the project seeks not to oppose the two but to find their shared movement / false movement dichotomy of dance and film to elicit the virtual dimension of movement, what she terms immediacy, or the generative condition of dynamicmedia irreducible to either the concrete presence of a dancer’s body or the idea of a represented body onscreen.

Pembroke Seminar Research Lectures

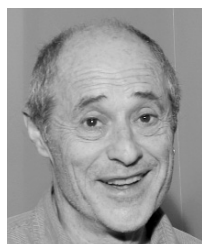


Judith Halberstam

*Professor of English
Director of the Center
for Feminist Research
University of Southern
California*

**“Transbiology: The
Spectacle of the
Non-Reproductive Body”**

October 17, 2006



Brian Rotman

*Professor of
Comparative Studies
Advanced Computing Center
for the Arts and Design
Ohio State University*

**“The Alphabet, Ghosts, and
Distributed Being”**

November 14, 2006



Faye Ginsberg

*Professor of Anthropology
Director, Graduate Program
in Culture and Media
Director, Center for Media,
Culture and History
Co-Director, Center for
Religion and Media
New York University*

**“Mediating Culture:
Indigenous Identity in
a Digital Age”**

February 27, 2007



Joseph Dumit

*Director, Science and
Technology Studies
University of California, Davis
Associate Editor,
Culture, Medicine & Psychiatry*

**“Bodies Aggregate:
Accumulating Prognoses,
Growing Markets,
Experimental Subjects”**

April 3, 2007

Pembroke Seminar Roundtable March 15-16, 2007 Mediation/Ethics

Jane Bennett

*Professor and Chair of Political Science
John Hopkins University*

Simon Penny

*Professor of Arts and Engineering
Claire Trevor School of the Arts and the
Henry Samueli School of Engineering
University of California, Irvine*

Leigh Raiford

*Assistant Professor of African
American Studies
University of California, Berkeley*

Kim Sawchuk

*Associate Professor of
Communication Studies
Concordia University*

Sharon Willis

*Professor of French/Visual
Cultural Studies
University of Rochester*

Joanna Zylinska

*Senior Lecturer in New Media
and Communications
Goldsmiths College, University of London*

Faculty Fellows

Lynne Joyrich

*MODERN CULTURE AND MEDIA
Chesler-Mallow Senior Faculty
Research Fellow*

Robert Self

*HISTORY
Edwin and Shirley Seave
Faculty Fellow*

Lingzhen Wang

*EAST ASIAN STUDIES
Edith Goldthwaite Miller
Faculty Fellow*

Graduate Fellows

Eugenie Brinkema

MODERN CULTURE AND MEDIA

Kenneth Prestininzi

*THEATRE AND
PERFORMANCE STUDIES*

Nathaniel Stein

HISTORY OF ART AND ARCHITECTURE

Undergraduate Fellow

Emily Underwood

SCIENCE AND SOCIETY

PEMBROKE CENTER POSTDOCTORAL FELLOWS, 1982-2006

2006-07 marks the Pembroke Center's twenty-fifth academic year. In two and a half decades, the Center has made a significant impact on the ways feminist theory and scholarship have transformed the academy. There are many ways to trace such an impact: by considering the Center's publications; by listing the extraordinary number of major theorists and scholars who have participated in Center conferences, seminars, and colloquia over the years; by citing how frequently scholars have warmly acknowledged the Pembroke Center's influence in their publications; by naming the many Brown faculty, graduate students, and undergrad-

uates who have participated in Center seminars and programs; by listing the numerous students who received their Brown degrees as Women's Studies or Gender Studies concentrators; by looking at the leadership of the Center's four directors to date: Joan Wallach Scott, Karen Newman, Ellen Rooney, and Elizabeth Weed.

One list that seems a particularly appropriate gauge of the Pembroke's Center's impact on the academy is that of the postdoctoral fellows who have spent a year in residence at the Center. As junior scholars, the fellows both contributed immeasurably to the Cen-

ter's development and benefited from the challenging intellectual exchanges made possible by the Pembroke Seminar. These scholars then went on, many of them, to achieve great distinction and to help transform their fields.

The following is simply a list of the names of the fellows and current photos where possible, with no information regarding publications or any other important achievements. We trust, however, that this glimpse of the range of the fellows who have worked at the Center will be some indication of the richness of the Pembroke Center's first twenty-five years.

1982-83

Gender, Representation, and Politics

Joan Wallach Scott, Seminar Leader



James Ault
Independent filmmaker, author, scholar
Northampton, MA



Anne Norton
Professor of Political Science
University of Pennsylvania



Mary Lou Ratté
Director
Hill Center for World Studies



Kaja Silverman
Class of 1940 Professor of Rhetoric and Film
University of California, Berkeley

1983-84

Values, Ethics, and the Meanings of Gender

Joan Wallach Scott, Seminar Leader



Janice Doane
Professor of English
Saint Mary's College of California



Yasmine Ergas
Adjunct Associate Professor of International Law
Columbia University



Harriet Whitehead
Resource Coordinator
Duke Cancer Patient Education Program
Duke University Medical Center



Françoise Basch
Professor Emerita of History
University of Paris

1984-85

Production, Reproduction, and Constructions of Sexual Difference

Joan Wallach Scott, Seminar Leader



Marnia Lazreg
Professor of Sociology
Hunter College and Graduate Center, City University Of New York



Denise Riley
Professor of Literature with Philosophy
University of East Anglia, United Kingdom



Diana Vélez
Associate Professor of Spanish and Portuguese Studies
University of Iowa



Jerome Wakefield
University Professor and Professor of Social Work
New York University

1986-87

Gender in Popular Culture and Popular Religion
Barbara Babcock,
Seminar Leader



Rey Chow
Andrew W. Mellon Professor of the Humanities
Brown University



Shahla Haeri
Director of Women's Studies Program and Associate Professor of Anthropology
Boston University



Kari Weil
Chair of Critical Studies
California College of the Arts



Mimi White
Professor of Radio/Television/ Film, and Associate Dean for Graduate Programs in the School of Communications
Northwestern University

1987-88

Gender, Ethnicity, and Race
Karen Newman,
Seminar Leader



Ana Maria Alonso
Associate Professor of Anthropology
University of Arizona



Katherine Platt
Associate Professor of Cultural Anthropology
Babson College



Jenny Sharpe
Professor of English and Comparative Literature
University of California, Los Angeles



Kathleen Zane
Lecturer in Language Arts
University of Hawaii

1988-89

Gender, State, and Political Identities
Karen Newman,
Seminar Leader



Christine Ward Gailey
Professor of Women's Studies and Anthropology
University of California, Riverside



Kristie McClure
Associate Professor of Political Science
University of California, Los Angeles



Valentine Moghadam
Professor of Sociology and Women's Studies; Director, Women's Studies Program
Purdue University



Afsaneh Najmabadi
Professor of History and of Studies of Women, Gender, and Sexuality,
Harvard University

1990-91

Cultural Literacies and "Difference"
Karen Newman,
Seminar Leader



Mary M. Childers
Writer, higher education consultant and Ombudsperson
Dartmouth College



Keya Ganguly
Associate Professor, Cultural Studies and Comparative Literature
University of Minnesota



Katherine Williams
Professor and Chair of Department of English
New York Institute of Technology

1991-92

Scientific Knowledge and "Difference"
Karen Newman,
Seminar Leader



Leslie Camhi
Photography Critic
The Village Voice



Lisa Cartwright
Professor of Communications
University of California, San Diego



Brian Cooper
Visiting Assistant Professor of Economics
Gettysburg College



Jennifer Terry
Director and Associate Professor of Women's Studies
University of California, Irvine

1992-93

Art in the Age of "Difference"
Ellen Rooney,
Seminar Leader



Lisa Bloom
Visiting Professor
Department of Communication
University of California, San Diego



Karin Cope
Instructor
Nova Scotia College of Art and Design



May Joseph
Associate Professor of Social Science and Cultural Studies
Pratt Institute

1993-94

Law, Letters and "Difference"
Ellen Rooney,
Seminar Leader



Laura Korobkin
*Associate Professor
of English*
Boston University



Janaki Nair
*Professor of History
Centre for Studies
in Social Sciences,
Kolkata, India*



Sylvia Schafer
*Associate Professor
of History*
University of Connecticut

1994-95

The Question of Violence
Ellen Rooney,
Seminar Leader



Kate Baldwin
*Associate Professor of
American Studies*
Northwestern University



Sarah Currie
*Classicist and Independent
Scholar*



Pamela Haag
Author and Speechwriter

1996-97

The Future of Gender
Elizabeth Weed,
Seminar Leader



Teresa Barnes
*Associate Professor
of History*
University of the Western
Cape, Cape Town



**Katherine
Rudolph-Larrea**
*Associate Professor
of Philosophy and Media
Studies Coordinator*
Rhode Island College



Charles Shepherdson
Professor of English
State University of
New York at Albany;
Visiting Professor
Tsinghua University,
Shinju, Taiwan

1997-98

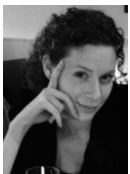
Disciplinary Difference
Ellen Rooney,
Seminar Leader



Geraldine Heng
*Associate Professor
of English and Director of
Medieval Studies*
University of Texas, Austin



Jody Lester
Independent Scholar



Alys Eve Weinbaum
*Associate Professor
of English*
University of Washington,
Seattle

1998-99

**Aesthetics, Politics,
and Difference**
Ellen Rooney, Seminar Leader



Alexander Des Forges
*Assistant Professor
of Chinese*
University of
Massachusetts, Boston



Monique Roelofs
*Associate Professor
of Philosophy*
Hampshire College



Ann Seaton
*Assistant Professor
of English*
City University of New York

1999-2000

The Culture of the Market
Ellen Rooney,
Seminar Leader



Lara Kriegel
*Associate Professor
of History (8/07)*
Florida International
University



Mary Ann O'Donnell
Vice Principal
Green Oasis School,
Shenzhen, China



Andrea Volpe
*Preceptor in
Writing Program in
Expository Writing*
Harvard College

2000-01 **The Question of Emotion – Elizabeth Weed, Seminar Leader**



Rogaia Abusharaf
*Senior Research Associate,
2005-2007*
Pembroke Center,
Brown University



Margherita Long
*Assistant Professor of
Comparative Literature
and Foreign Languages*
University of California,
Riverside



Marianne Janack
*Associate Professor
of Philosophy*
Hamilton College

2001-02

Technology and Representation

Mary Ann Doane,
Seminar Leader



Athena Athanasiou
*Assistant Professor
of Social Anthropology
and Gender*
Panteio University of Social
and Political Sciences, Athens



Richard Benjamin
Senior Fellow
Demos: A Network
for Ideas and Action



Aden Evens
*Assistant Professor
of English*
Dartmouth College



Ursula Frohne
Professor of Art History
University of Cologne

2002-03

Theories of Embodiment

Anne Fausto-Sterling,
Seminar Leader



Greg Downey
*Lecturer, Department
of Anthropology*
Macquarie University,
Sydney



Gayle Salamon
*Costen LGBT
Postdoctoral Fellow*
Princeton University



Deborah Weinstein
*Mellon Fellow in the
History of Medicine*
Brandeis University

2003-04

Shame

David Konstan,
Seminar Leader



Timothy Bewes
*Assistant Professor
of English*
Brown University



Dicle Kogacioglu
*Assistant Professor
of Sociology*
Sabanci University, Istanbul



Judith Surkis
*Associate Professor
of History, and
History and Literature*
Harvard University

2004-05

The Orders of Time

Rey Chow,
Seminar Leader



Janelle Blankenship
*Assistant Professor/
Faculty Fellow*
Department of German,
New York University



Jane Elliott
*Assistant Professor
of English*
University of York



Adam Gutteridge
*Adjunct Assistant Professor
of Arts & Humanities*
American University at Rome
Research Assistant
British School at Rome



Rama Matena
*Assistant Professor
of Modern South
Asian History*
University of Illinois
at Chicago

2005-06

The Language of Victimization

Carolyn Dean,
Seminar Leader



Lori Allen
Academy Scholar
Academy for International
and Area Studies,
Harvard University



Sharika Thiranagama
*ESRC Postdoctoral Fellow
in Social Anthropology*
University of Edinburgh



Donna Trembinski
*Adjunct Professor of
Medieval History*
Queen's University,
Ontario, Canada

2006-07

Mediated Bodies/Bodies of Mediation

Lynne Joyrich,
Seminar Leader



Jennifer Boyle
*Carol G. Lederer
Postdoctoral Fellow*
Pembroke Center
Assistant Professor of English
Hollins University



Eden Osucha
*Nancy L. Buc
Postdoctoral Fellow*
Pembroke Center



Alanna Thain
*Artemis A.W. and
Martha Joukowsky
Postdoctoral Fellow*
Pembroke Center
*Assistant Professor
of English*
McGill University

*The Pembroke Center would like to
thank Kate Horning '07 for her excellent
research in preparing this overview.*

Two Postdoctoral Profiles

Rey Chow



A postdoctoral fellow at the Pembroke Center in 1986-87, Rey Chow is currently the Andrew W. Mellon Professor of the Humanities, and Professor of Comparative Literature and of Modern Culture and Media at Brown. When Rey Chow came to the Center in the fall of 1986, she had recently received her PhD in Modern Thought and Liter-

ature from Stanford University. After her time at Pembroke, she went on to faculty appointments at the University of Minnesota and at the University of California, Irvine, returning to Brown as a distinguished member of the faculty in 2000.

Chow is the author of *Woman and Chinese Modernity: The Politics of Reading between West and East*, University of Minnesota Press, 1991; *Writing Diaspora: Tactics of Intervention in Contemporary Cultural Studies*, Indiana University Press, 1993; *Primitive Passions: Visuality, Sexuality, Ethnography, and Contemporary Chinese Cinema*, Columbia University Press, 1995; *Ethics after Idealism: Theory-Culture-Ethnicity-Reading*, Indiana University Press, 1998; *The Protestant Ethic and the Spirit of Capitalism*, Columbia University Press, 2002; and *The Age of the New World Target: Self-Referentiality in War, Theory, and Comparative Work*, Duke University Press, 2006.

In addition, Chow is the author of numerous articles and essays, the editor of several special volumes, and the member of more than twenty-five advisory and editorial boards of scholarly journals. She is the recipient of many academic awards, including a John Simon Guggenheim Foundation Fellowship and the Modern Language Association's James Russell Lowell Prize for *Primitive Passions*.

Rey Chow is a member of the Pembroke Center's Faculty Advisory Board and of the editorial board of *differences: A Journal of Feminist Cultural Studies*. In 2004-05, she was the Chesler Mallow Senior Faculty Research Fellow at the Center and director of the Pembroke Seminar on "The Orders of Time." During the spring semester of that year, she also served as Acting Director of the Center.

Timothy Bewes



Timothy Bewes, currently the William A. Dyer, Jr. Assistant Professor of the Humanities and Assistant Professor of English at Brown, was the Carol G. Lederer Postdoctoral Fellow at the Pembroke Center in 2003-04. After receiving his D.Phil degree in English Literature from the University of Sussex, Bewes was a visiting faculty member at several institutions, including Brown and Brandeis. He was appointed to the Brown faculty in 2004 and will be promoted to Associate Professor with tenure in July.

The author of *Cynicism and Postmodernity*, Verso, 1997, and *Reification, or The Anxiety of Late Capitalism*, Verso, 2002, he is co-editor of *Cultural Capitalism: Politics after New Labour*, Lawrence and Wishart, 2000, and the editor of two special journal issues, one for *New Formations* (2002) and the other for *Novel: A Forum on Fiction* (2006). He is author of a number of scholarly articles and essays; he serves on three editorial boards, and is on the advisory board of the *Blackwell Encyclopedia of the Novel*. During spring semester of 2007, he is the recipient of a Cogut Humanities Center Faculty Fellowship.

“Gender Justice and the Woman Question in the Middle East”

The Center’s research initiative on gender and Muslim practices will go on the road next fall. The Museum of Anthropology and Archeology at the University of Pennsylvania has invited Rogaia Abusharaf, Senior Research Associate at the Pembroke Center, to convene a conference at the Museum on “Gender Justice and the Woman Question in the Middle East.” The conference, to be held on October 22-26, will bring leaders and scholars from Palestine, Tunis, Egypt, Saudi Arabia, Qattar, Iraq, Iran, Bangladesh, Sudan, and Morocco. The conference is one of the new international initiatives sponsored by the Museum to promote interdisciplinary thinking on human society. Abusharaf

will serve as editor of the conference proceedings, which will be published by the University of Pennsylvania’s Museum Press.

On November 16-17, the Pembroke Center will host a conference at Brown on “Gender and the Politics of ‘Traditional’ Muslim Practices.” The event will bring together an interdisciplinary group of international scholars to examine the politics embedded in representations of “tradition” and to locate the analytic gaps in much of the research on the topic.



Rogaia Abusharaf, Senior Research Associate at the Pembroke Center, speaking in February at a lecture sponsored by the Friends of the Haffenreffer Museum of Anthropology on “Female Circumcision: Multiple Perspectives/Difficult Questions.” Abusharaf is the editor of *Female Circumcision: Multicultural Perspectives* (University of Pennsylvania Press, 2006).

Ford Foundation Funds Postdoctoral Fellowship for Embodiment Research Initiative



Deborah Schooler

By applying a dynamic systems approach to questions about human development, the Embodiment Research Initiative looks at how bodies and environments jointly produce sex differences. Directed

by Anne Fausto-Sterling, Professor of Molecular Biology, Cell Biology, and Biochemistry, this initiative moves beyond the traditional “nature vs. nurture” debate and undertakes a more complex investigation of how the body, brain, and social interactions work together to produce human sexual identities, particularly in early childhood.

The Ford Foundation awarded a grant to the Department of Biology and the Pembroke Center to support a postdoctoral fellowship for the research initiative. Deborah Schooler, a 1999 graduate of Brown University who earned her Ph.D. in Developmental Psychology from the University of Michigan, is the recipient of the fellowship.

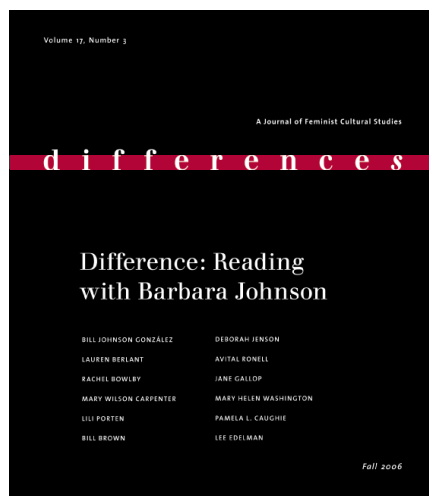
Schooler is overseeing an observational study, which involves coding a set of research videotapes of infants aged two to fourteen months. Researchers at the Cen-

ter for the Study of Human Development videotaped the infants nearly every week over the course of a year, interacting with their mothers, but also by themselves.

Schooler is developing the framework for data analysis of the tapes, coding the tapes for patterns of behavior, such as vocalization, as well as interactions between parent and child. When the data analysis is complete, researchers hope to be able to test hypotheses and identify how stable patterns emerge that point to differences between the genders.

“My research at the University of Michigan looked at gender and adolescence, in particular body image and sexuality,” said Schooler. “This postdoctoral fellowship at Brown allows me to apply new methodologies and a dynamic systems approach to questions about gender and sex differentiation. It is a great opportunity to be a part of this exciting work.”

differences: A Journal of Feminist Cultural Studies



differences, affiliated with the Pembroke Center, is published three times a year by Duke University Press.

Fall 2006

The editors are pleased to announce the appearance of a special issue of *differences* dedicated to Barbara Johnson, whose thinking opened a vital path for the journal's work. Contributors to *Difference: Reading with Barbara Johnson* (17.3) include Bill Johnson González, Lauren Berlant, Rachel Bowlby, Mary Wilson Carpenter, Lili Porten, Bill Brown, Deborah Jensen, Avital Ronell, Jane Gallop, Mary Helen Washington, Pamela L. Caughie, and Lee Edelman.

Spring 2007

Currently in production is *Indexicality: Trace and Sign* (18.1) guest edited by Mary Ann Doane, professor of Modern Culture and Media at Brown. This special issue brings together scholars from a range of different disciplines—art history, science studies, film studies, and analysts of digital media—who address in various ways anxieties surrounding the status of representation in what has been described as our “post-medium condition.”

Fall 2007

In the works: *God and Country*, a special issue guest edited by Elizabeth Castelli, Professor of Religion at Barnard College. This issue (18.3) will bring together the work of scholars interested in the intellectual underpinnings of conservative Christian activism in contemporary U.S. culture.

The *differences* book series has added another title to its list. *Women's Studies on the Edge*, edited by Joan Wallach Scott, aims to take stock of women's studies, evaluating critically its institutionalization and daring to ask what its future might hold. This collection of articles by Wendy Brown, Robyn Wiegman, Ellen Rooney, Beverly Guy-Sheftall and Evelyn Hammonds, Afsaneh Najmabadi, Gayle Salamon, Saba Mahmood, Biddy Martin, and Joan Wallach Scott refuses to be polite about the problems faced by women's studies; instead, it turns feminism's critical edge upon itself. The volume will appear with Duke University Press in 2008.

Gender and Sexuality Studies

In fall 2006, the Gender Studies program joined with the Sexuality and Society concentration to form a new concentration, Gender and Sexuality Studies. The new program reflects the way research and teaching in the fields of gender studies and sexuality studies have become increasingly interrelated, a development visible in the work of Brown's faculty as well as in Brown's peer institutions, notably Harvard and Yale, which have degree programs combining the two fields.

The newly defined program will allow students to develop concentrations that focus on constructions of gender and sexuality in social, cultural, political, economic, or scientific contexts. For example, a student might choose to focus on the acculturation of gender, sexuality, and race in American politics or activism, or on the construction of sexual and gendered identities in educational institutions, or in various forms of visual media. Students will also have the option to focus their concentrations on one or the other category of analysis.

Annual Gender Studies Lecture

James N. Green

Associate Professor of History and Portuguese and Brazilian Studies
Brown University

**“Who is the Macho Who Wants to Kill Me?”
Revolutionary Masculinity,
Homosexuality, and the Armed
Struggle in Brazil in the 1960s
and 1970s.**

October 4, 2006



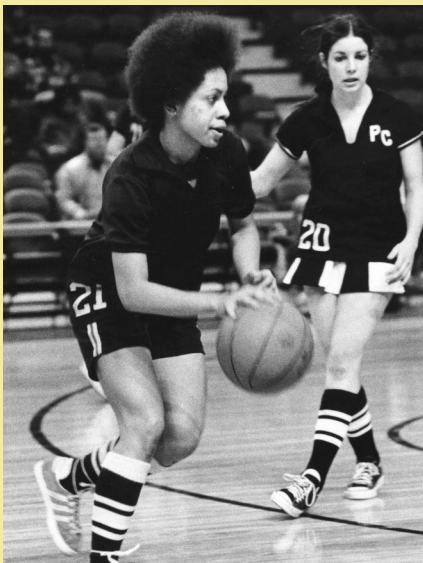
Italian Studies and Gender Studies Awarded International Postdoctoral Fellowship

In conjunction with Brown's new international initiatives, the Cogut Center for the Humanities recently invited academic units at Brown to apply for international postdoctoral fellowships. The Italian Studies Department and the

Gender Studies program jointly applied and were awarded one of the fellowships. An international search is underway to fill the two-year position. Once here, the postdoctoral fellow will teach courses in Italian Studies and Gender

Studies and conduct research on questions of gender in early modern science. The fellow will also participate in a bi-weekly seminar at the Cogut Center on the theme of the humanities and the transnational university.

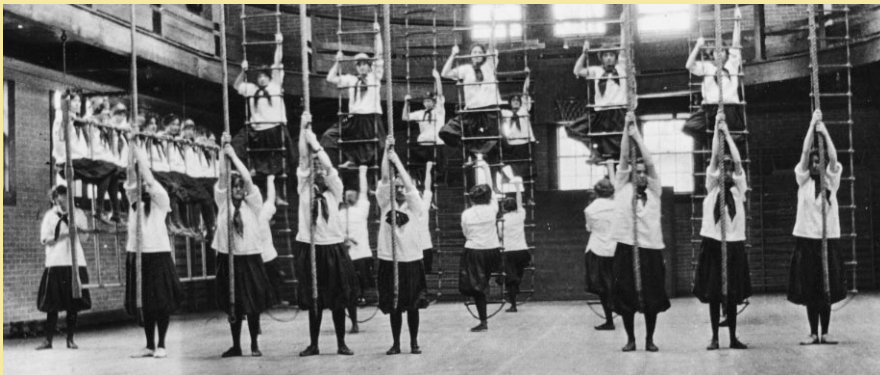
Associates Celebrate the History of Women at Pembroke College and Brown University



The Pembroke Center Associates are a dedicated group of alumnae/i and friends whose activities support the academic work of the Pembroke Center. An important part of the Associates' work includes preserving the history of women at Brown University.

Much of this is done through the Christine Dunlap Farnham Archives, housed at the John Hay Library, which focuses on Brown and Rhode Island women and their organizations. The Archives contains correspondence, diaries, photographs, newspapers, yearbooks, memorabilia, oral history tapes, and videos.

As part of its efforts to document the history of women at Brown, the Associates recently published "A Brief History of Women's Sports at Pembroke College and Brown University." The four-page timeline features photographs from the Christine Dunlap Farnham Archives and important milestones dating from 1897 to the present day. Arlene Gorton '52, Professor Emerita of Physical Education and former Assistant Director of Athletics for Brown University, directed the research for the piece.



Barbara Anton Intern: Sarah Adler-Milstein



The Pembroke Center Associates, the Center's alumnae/i support organization, award an annual internship to an undergraduate student whose honors project involves an internship or volunteer work in a community agency. This year, the Associates awarded the internship grant of \$1000 to Sarah Adler-Milstein, who is conducting field research with Sindicato de Trabajadores de BJ&B (Union of Workers of BJ&B) in the Dominican Republic.

The union is an independent organization of garment workers devoted to improving working conditions, quality of life, and equality for women workers. The union's success is threatened by the competitive forces of the global market. Adler-Milstein's thesis involves a case study of the union aimed at illuminating the complex interrelations between the global labor market, unions, and women.

The union is an independent organization of garment workers devoted to improving working conditions, quality of life, and equality for women workers. The union's success is threatened by the competitive forces of the global market. Adler-Milstein's thesis involves a case study of the union aimed at illuminating the complex interrelations between the global labor market, unions, and women.

Pembroke Center
for TEACHING AND RESEARCH ON WOMEN

Brown University
Box 1958
Providence, RI 02912

Presort First Class
US Postage
PAID
Permit No. 202
Providence, RI

**Pembroke Center
Advisory Board**

Rey Chow
*Comparative Literature
and Modern Culture and Media*

Carolyn J. Dean
*History and Modern Culture
and Media*

Mary Ann Doane
*Modern Culture and Media
and English*

Anne Fausto-Sterling
Biology and Medicine

David Konstan
Classics and Comparative Literature

Ex Officio
Nancy Armstrong
*English, Comparative Literature,
and Modern Culture and Media*

Karen Newman
*Comparative Literature
and English*

Ellen Rooney
*Modern Culture and Media
and English*

**Pembroke Center Associates
Council Officers**

Diane Lake Northrop '54, P'81
Chair

Phyllis Santry '66
Vice-Chair

Pembroke Center Staff

Elizabeth Weed, Ph.D. '73
Director

Christy Law Blanchard
Director of Alumnae/i Affairs

Denise Davis, A.M. '97
Managing Editor of differences

Donna Goodnow
Center Manager

Rogaia Abusharaf
Senior Research Associate

Tamar Katz
Director of Gender Studies

Jane Lancaster, Ph.D. '98
*Consultant to the Christine Dunlap
Farnham Archives*

**contact
information**

Pembroke Center
Brown University
Box 1958
Providence, RI 02912

phone: 401 863-2643

fax: 401 863-1298

e-mail: Pembroke_Center@brown.edu

web: www.pembrokecenter.org